



FOR YOUTH DEVELOPMENT®
FOR HEALTHY LIVING
FOR SOCIAL RESPONSIBILITY

BEST SUMMER EVER™



2018 SUMMER CAMP KEYSTONE



there's **TONS TO LEARN, PLAY & EXPLORE** at **YMCA SUMMER CAMPS!**

What makes us the best choice for your child?

- A SAFE, ENJOYABLE and AFFORDABLE option for families
- Weekly pricing options
- Flexible scheduling with weekly half-day, full-day and extended care options
- A great mix of college-age and adult staff
- Varied programming to allow kids to experience something different each week
- Indoor play options for inclement weather
- Weekly communication and text notification
- Camp Facebook group providing photos and important information about the week
- Weekly trip options
- Financial Assistance available
- Tons of outdoor space with access to air conditioned classrooms at Keystone Elementary
- Archery camp

Your camper will be placed according to grade going into September 2018 for the 2018/2019 school year



CUBS | GRADES K-1

Your Cub will build meaningful friendships through exciting activities and play.



WOLVES | 2ND GRADE

Your child will have a howlin' good time participating in a wide variety of activities while making new friends and memories.



TIGERS | 3RD GRADE

Tigers will express their creativity throughout all of the thrilling experiences camp has to offer.



LIONS | GRADES 4-5

Your Lion will gain a sense of empowerment. Leave your paw print on Camp at the Y.



EAGLES | GRADES 6-7

Your PreTeen will enjoy the fun environment of camp while serving as a role model for younger campers.

11 WEEKS OF ADVENTURE!

Held at Keystone Elementary School, 1800 Keystone St, Croydon, PA 19201

WEEK 1 | BEACH BASH | 6/18-6/22

EMPHASIS: Cultural Competence

SPIRIT TUESDAY: Inside out/Backwards Day

BIG EVENT: Luau

FRIDAY TRIP: Adventure Aquarium

WEEK 2 | STARS & STRIPES | 6/25-6/29

EMPHASIS: Peaceful Conflict Resolution

SPIRIT TUESDAY: Crazy Sock Day

BIG EVENT: July 4th Parade & Sing Along

FRIDAY TRIP: Constitution Center

WEEK 3 | TREASURE ISLAND | 7/2-7/6

EMPHASIS: Positive View of Personal Future

SPIRIT TUESDAY: Pirate Day

BIG EVENT: Treasure Hunt

FRIDAY TRIP: Independence Seaport Museum

*No camp WED JULY 4

WEEK 4 | Y's GOT TALENT | 7/9-7/13

EMPHASIS: Integrity

SPIRIT TUESDAY: Crazy Hair Day

BIG EVENT: Family Night Talent Show

FRIDAY TRIP: Legoland

WEEK 5 | OLYMPIC WEEK | 7/16-7/20

EMPHASIS: Equality and Social Justice

SPIRIT TUESDAY: School Spirit

BIG EVENT: Camp Wars - Wear your team color

FRIDAY TRIP: Cherry Crest Farm

WEEK 6 | HOLIDAY WEEK | 7/23-7/27

EMPHASIS: Responsibility

SPIRIT TUESDAY: Pajama Day

BIG EVENT: Winter Holiday Party

FRIDAY TRIP: Diggerland

WEEK 7 | WILD WEST | 7/30-8/3

EMPHASIS: Honesty

SPIRIT TUESDAY: Twin Day

BIG EVENT: Gold Rush

FRIDAY TRIP: Crystal Cave

WEEK 8 | CARNIVAL | 8/6-8/10

EMPHASIS: Caring

SPIRIT TUESDAY: Crazy Hat Day

BIG EVENT: Penny Carnival

FRIDAY TRIP: Sesame Place

WEEK 9 | DECADES OF FUN | 8/13-8/17

EMPHASIS: Personal Power

SPIRIT TUESDAY: Tie Dye Day

BIG EVENT: Time Machines

FRIDAY TRIP* (must register): Philly Scavenger Hunt

WEEK 10 | WELCOME TO THE JUNGLE 8/20-8/24

EMPHASIS: Self-Esteem

SPIRIT TUESDAY: Group Color

BIG EVENT: Safari

FRIDAY TRIP: Philadelphia Zoo

WEEK 11 | TRIP WEEK | 8/27-8/31

\$225 | Must Register ahead

8/27: Franklin Institute

8/28: Crayola Factory

8/29: Discovery Museum

8/30: Holland Outdoor Center

8/31: Dorney Park

*Trip Option for Fridays. Registration required.

FINANCIAL ASSISTANCE INFORMATION

1. Submit the completed Financial Assistance Application with all required paperwork (2017 tax return and current financial information – pay, support, welfare, social security, unemployment, etc.) to the Welcome Center.
2. Allow at least 3 weeks for processing of the financial assistance application.
DEADLINES:
 - June camp requests must be submitted by June 1
 - July camp requests must be submitted by June 15
 - August camp requests must be submitted by July 1
3. After receiving your qualification for financial assistance, if you decide to register for camp, please do so at the Welcome Center.



Everyone deserves the Y!

Financial Assistance Guidelines
available online at lbfymca.org/camp

NANCY FLETCHER | Financial Assistance | nfletcher@lbfymca.org | 215.949.3400 x46

ALAN CHRZANOWSKI | Apple Funding | achrzanowski@lbfymca.org | 215.949.3400 x21



PRICING & AVAILABILITY | REGISTER ONLINE AT LBFYMCA.ORG OR AT THE WELCOME CENTER

	GRADE IN SEPT. 2018	TIME	MEMBER PRICE	NON- MEMBER PRICE	WEEK 1 JUNE 18- JUNE 22	WEEK 2 JUNE 25- JUNE 29	WEEK 3* JULY 2- JULY 6	WEEK 4 JULY 9- JULY 13	WEEK 5 JULY 16- JULY 20	WEEK 6 JULY 25- JULY 29	WEEK 7 JULY 23- JULY 27	WEEK 8 AUG 6- AUG 10	WEEK 9 AUG 13- AUG 17	WEEK 10 AUG 20- AUG 24	WEEK 11 AUG 27- AUG 31
ADVENTURE CAMPS (3 & 5 DAY) WHEN COMBINING AM & PM CAMPS, CAMPERS REMAIN IN OUR CARE DURING 12PM-1PM TIME GAP FOR LUNCH															
ADVENTURE 5-DAY FULL DAY	K-7 TH	9AM-4PM	\$103	\$120	9AM-4PM	9AM-4PM	9AM-4PM	9AM-4PM	9AM-4PM	9AM-4PM	9AM-4PM	9AM-4PM	9AM-4PM	9AM-4PM	TRIPS**
ADVENTURE 5-DAY AM ONLY	K-7 TH	9AM-12PM	\$53	\$63	9AM-12PM	9AM-12PM	9AM-12PM	9AM-12PM	9AM-12PM	9AM-12PM	9AM-12PM	9AM-12PM	9AM-12PM	9AM-12PM	N/A
ADVENTURE 5-DAY PM ONLY	K-7 TH	12PM-4PM	\$62	\$72	12PM-4PM	12PM-4PM	12PM-4PM	12PM-4PM	12PM-4PM	12PM-4PM	12PM-4PM	12PM-4PM	12PM-4PM	12PM-4PM	N/A
ADVENTURE 3-DAY FULL DAY	K-7 TH	9AM-4PM	\$83	\$93	9AM-4PM	9AM-4PM	9AM-4PM	9AM-4PM	9AM-4PM	9AM-4PM	9AM-4PM	9AM-4PM	9AM-4PM	9AM-4PM	N/A
PRESCHOOL 5-DAY FULL DAY	AGES 3-5	9AM-4PM	\$160	\$170	9AM-4PM	9AM-4PM	9AM-4PM	9AM-4PM	9AM-4PM	9AM-4PM	9AM-4PM	9AM-4PM	9AM-4PM	9AM-4PM	N/A
PRESCHOOL 5-DAY AM ONLY	AGES 3-5	9AM-12PM	\$108	\$120	9AM-12PM	9AM-12PM	9AM-12PM	9AM-12PM	9AM-12PM	9AM-12PM	9AM-12PM	9AM-12PM	9AM-12PM	9AM-12PM	N/A
PRESCHOOL 3-DAY FULL DAY	AGES 3-5	9AM-4PM	\$108	\$120	9AM-4PM	9AM-4PM	9AM-4PM	9AM-4PM	9AM-4PM	9AM-4PM	9AM-4PM	9AM-4PM	9AM-4PM	9AM-4PM	N/A
PRESCHOOL 3-DAY AM ONLY	AGES 3-5	9AM-12PM	\$96	\$106	9AM-12PM	9AM-12PM	9AM-12PM	9AM-12PM	9AM-12PM	9AM-12PM	9AM-12PM	9AM-12PM	9AM-12PM	9AM-12PM	N/A
COUNSELOR IN TRAINING 5-DAY	8-10 TH	9AM-4PM	\$70	\$80	9AM-4PM	9AM-4PM	9AM-4PM	9AM-4PM	9AM-4PM	9AM-4PM	9AM-4PM	9AM-4PM	9AM-4PM	9AM-4PM	TRIPS**
SPORTS & SPECIALTY CAMPS (5 DAY) WHEN COMBINING AM & PM CAMPS, CAMPERS REMAIN IN OUR CARE DURING 12PM-1PM TIME GAP FOR LUNCH															
AFTERNOON SPORTS	K-7 TH	12-4PM	\$62	\$72	12-4PM	12-4PM	12-4PM	9AM-12PM	12-4PM	12-4PM	12-4PM	12-4PM	12-4PM	12-4PM	N/A
ART	K-7 TH	9AM-12PM	\$91	\$101	9AM-12PM	N/A	9AM-12PM	N/A	9AM-12PM	N/A	9AM-12PM	N/A	9AM-12PM	N/A	N/A
BASKETBALL	K-7 TH	9AM-12PM	\$91	\$101	N/A	9AM-12PM	N/A	9AM-12PM	N/A	9AM-12PM	N/A	9AM-12PM	N/A	9AM-12PM	N/A
JEDI TRAINING	K-7 TH	9AM-12PM	\$91	\$101	N/A	N/A	N/A	N/A	9AM-12PM	9AM-12PM	N/A	N/A	N/A	N/A	N/A
SUPER HERO TRAINING	K-7 TH	9AM-12PM	\$91	\$101	N/A	N/A	9AM-12PM	N/A	N/A	N/A	N/A	N/A	N/A	9AM-12PM	N/A
SUPER SPORTS	K-7 TH	9AM-12PM	\$91	\$101	9AM-12PM	N/A	9AM-12PM	N/A	9AM-12PM	N/A	9AM-12PM	N/A	9AM-12PM	N/A	N/A
EXTENDED CARE															
EARLY CARE 5-DAY	K-7 TH	7AM-9AM	\$30	\$40	7AM-9AM	7AM-9AM	7AM-9AM	7AM-9AM	7AM-9AM	7AM-9AM	7AM-9AM	7AM-9AM	7AM-9AM	7AM-9AM	7AM-9AM
LATE CARE 5-DAY	K-7 TH	4PM-6PM	\$30	\$40	4PM-6PM	4PM-6PM	4PM-6PM	4PM-6PM	4PM-6PM	4PM-6PM	4PM-6PM	4PM-6PM	4PM-6PM	4PM-6PM	4PM-6PM
EARLY CARE 3-DAY	K-7 TH	7AM-9AM	\$24	\$34	7AM-9AM	7AM-9AM	7AM-9AM	7AM-9AM	7AM-9AM	7AM-9AM	7AM-9AM	7AM-9AM	7AM-9AM	7AM-9AM	N/A
LATE CARE 3-DAY	K-7 TH	4PM-6PM	\$24	\$34	4PM-6PM	4PM-6PM	4PM-6PM	4PM-6PM	4PM-6PM	4PM-6PM	4PM-6PM	4PM-6PM	4PM-6PM	4PM-6PM	N/A

*PRO-RATED PRICES - NO CAMP TUESDAY, JULY 4 **TRIP WEEK: Members: \$225 Non-Members: \$250, registration required.

PLEASE NOTE: Required Immunization Forms must be turned into camp staff prior to first week of camp.

Apple/CCIS and Financial Assistance through the YMCA available

REGISTER at lbfymca.org or at our Fairless Hills and Newtown Welcome Centers!

Y CAMPS | TRY ONE, TRY THEM ALL!

ADVENTURE CAMP A sampling of Y sports and activities for your camper! New themes each week.

PRESCHOOL CAMP Indoor and outdoor activities in an academic framework. Encourages academic growth throughout the summer months. Must be 100% potty-trained.

ART A new curriculum each week including exploring different medias, a splash of art history, daily art projects and fun!

SUPER HERO TRAINING Campers will train like Batman, fly like Iron Man, and discover the super hero inside themselves.

JEDI TRAINING An active, high paced camp to train the newest Jedi!

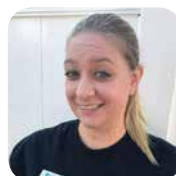
BASKETBALL Grouped by age. Stations help develop dribbling, shooting, passing and defensive skills. Game play each day. Finals games every Friday.

SUPER SPORTS Learn a different sport each day of the week! Each week will close with a multi-sports day.



KEVIN CRAIL

Branch Executive / Camp Director
Fairless Hills | Holland | Millcreek
Keystone | Morrisville
kcrail@cbfymca.org



ASHLEY ANDERSON

Camp Specialist
aanderson@lbfymca.org





LOWER BUCKS FAMILY YMCA | FAIRLESS HILLS

601 S. Oxford Valley Road
Fairless Hills, PA 19030
215.949.3400 | lbfymca.org

1/31/18

Y CAMP held at KEYSTONE ELEMENTARY SCHOOL

APRIL 21
10AM-1PM

CHARGE
INT
SUMMER!

The Best Summer Ever Starts at
HEALTHY KIDS DAY!

FREE!

FAIRLESS HILLS BRANCH

ASK QUESTIONS, MEET
CAMP STAFF & REGISTER
at our Open House Events:

TUES MAR 20 | 4-6 PM
Keystone Elementary School



KEYSTONE
ELEMENTARY SCHOOL
1800 Keystone St
Croydon, PA 19201